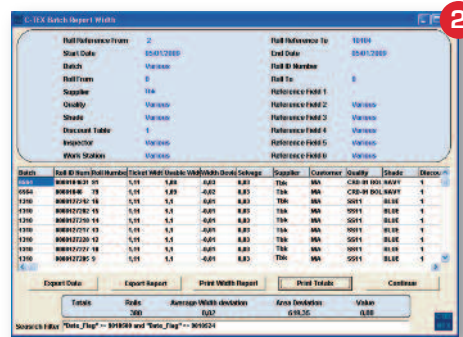
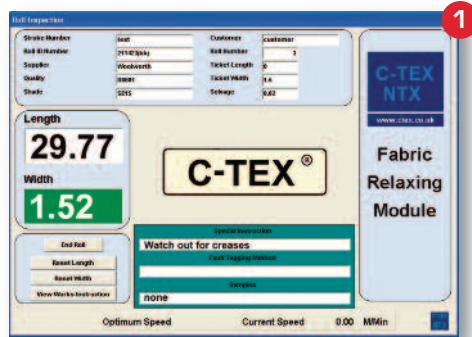


With the increasing use of elastomeric and Lycra fabrics in all sectors of apparel and textile industries NIXTEX have developed the C-TEX RM Relaxing Machine to provide optimum handling and utilisation of tension sensitive fabric.

- Two stage fabric relaxation.
- Consistent roll output.
- Accurate width batching.

1. Real time length and width.
2. Width batching of fabric in stock.



Technical Specification	Metric	Imperial
Speed	0 to 60 metres/min	0 to 65 yards/min
Fabric width	2500mm	98 inches
Overall width	3800mm	149 inches
Overall machine height	1600mm	63 inches
Overall machine depth	1800mm	71 inches
Standard roll diameter	450mm (larger on request)	18 inches
Standard roll weight	80KG (heavier on request)	176 lb
Electrical requirements	240v, 50Hz (single phase)	110v, 60Hz
Pneumtical requirement	6 mar	80 p.s.i.

Tensionless input - cloth roll bar feed or twin unwind rollers

Fabric is unwound off the roll without introducing tension.

Relaxation Stage 1

Fabric is unwound into a photocell controlled lazy loop, which returns the fabric to its natural state.

Relaxation Stage 2

Fabric passes over an air-floatation zone.

Calibrated length measurement

Fabric length is measured using an industry standard calibrated measuring wheel combined with an adjustable pressure roller to eliminate material slippage.

Automatic width monitoring

Fabric width is measured throughout the complete length of roll.

Accurate edge control

Photoelectrical sensors for accurate re-rolling of material.

Consistent output - twin rewind rollers

Processed rolls are rewound with the minimum amount of tension and are consistent from roll to roll.

Data collection and analysis system

The data collected is automatically processed offering objective supplier appraisal and management information for production planning.

